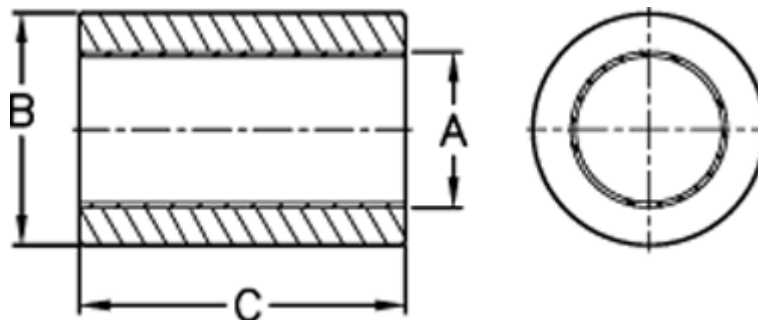


Article number: 50403040035

Description: Sleeve bearing PSM 3040-35

Measures



A max	= 30.096	Bush weight kg = 0.05349
A min	= 30.050	Bush $\bar{\quad}$ external = 40
B max	= 40.068	Bush $\bar{\quad}$ internal = 30
B min	= 40.043	C max = 35
Bore "push-fit" max	= 40.025	C min = 34.50
Bore "push-fit" min	= 40.000	Shaft $\bar{\quad}$ = 35
Bore housing coarse fit max	= 40.093	Static load (kg) = 2206
Bore housing coarse fit min	= 40.068	